



**For Immediate Release**

**May 12, 2021**

Media Contacts:

Lauren Stephens – (202) 465-6112, [lauren.stephens@dc.gov](mailto:lauren.stephens@dc.gov)

Mariam Nabizad – (202) 359-2678, [mariam.nabizad@dc.gov](mailto:mariam.nabizad@dc.gov)

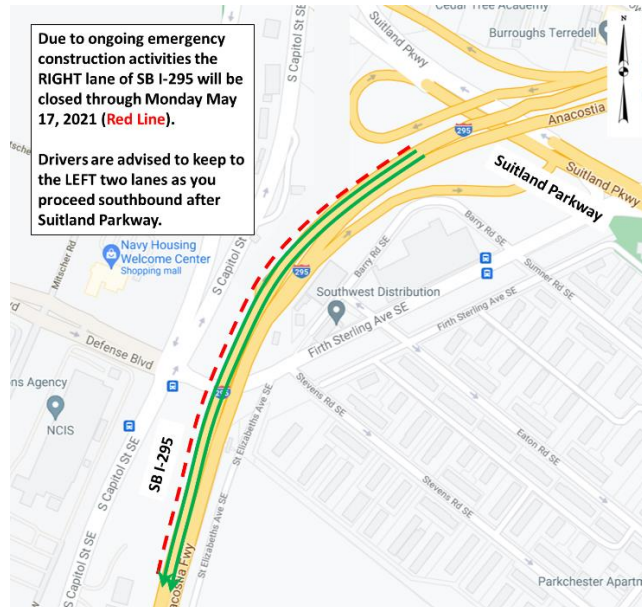
## **RIGHT Lane of SB I-295 will be closed**

**Through Monday May 17, 2021**

(Washington, DC) – Due to ongoing construction activities the District Department of Transportation (DDOT) will keep the RIGHT lane of SB I-295 closed through Monday May 17, 2021 as shown in the graphic. Drivers are advised to keep to the LEFT two lanes as you proceed southbound after Suitland Parkway.

Please observe the posted speed limit and proceed through the construction area with caution.

### **Howard Road SE Closure & Detour**



These closures are required for construction activities associated with the **South Capitol Street Corridor Project - Frederick Douglass Memorial Bridge**.

The South Capitol Street Corridor Project calls for replacing the Frederick Douglass Memorial Bridge and transforming related sections of the urban freeway into a beautiful scenic boulevard that increases pedestrian and vehicular safety, improves multimodal transportation options, increases community accessibility and supports economic development on both sides of the Anacostia River.

Traffic controls will be in place to guide all users of the roadway through the work zones safely. Motorists should expect delays due to the lane closures and are advised to stay alert and be observant of signage and road work crews while traveling in this area.

For more information about the Frederick Douglass Memorial Bridge Project and to stay up-to-date on traffic related impacts and construction progress, please visit, visit [www.newfrederickdouglassbridge.com](http://www.newfrederickdouglassbridge.com).

###

For more information about DDOT's ongoing efforts to improve the 295 corridor, visit <http://www.improving295dc.com>.

*The mission of the District Department of Transportation (DDOT) is to enhance the quality of life for District residents and visitors by ensuring that people, goods, and information move efficiently and safely with minimal adverse impact on residents and the environment.*

*Follow us on [Twitter](#) for transportation-related updates and more; like us on [Facebook](#) and visit the website at [www.ddot.dc.gov](http://www.ddot.dc.gov). Visit [goDCgo.com](http://goDCgo.com) for more information on transportation options in the District.*