



FOR IMMEDIATE RELEASE

February 4, 2021

Media Contacts:

Lauren Stephens – (202) 465-6112, lauren.stephens@dc.gov

Mariam Nabizad – (202) 359-2678, mariam.nabizad@dc.gov

South Capitol Street Corridor Project Weekly Temporary Closures February 8 through February 15, 2021

(Washington, DC) – The District Department of Transportation (DDOT) will temporarily close roadways, lanes, ramps and shoulders on the following corridors to perform construction activities along I-295 / DC 295 and nearby local roads. These closures are contingent on suitable weather, field conditions, and/or adjacent construction activities. Daily closures will typically take place between 9:30 a.m. and 4:00 p.m. Nightly closures will typically take place between 8:00 p.m. and 6:00 a.m. the following day (unless otherwise stated below).

Single left or right lane closures will occur anytime daily and nightly on northbound and southbound I-295 between Exit 1 (Laboratory Road / US Naval Research Lab) and I-695. Double left or right lane closures will only occur nightly until the following morning.

Double left or right lane closures on southbound I-295 will also occur on Saturday, February 13, 2021 from 7:00 a.m. to 8:00 p.m. This closure is planned as an alternate closure due to potential inclement weather.

Single left or right lane closures will occur daily and nightly on South Capitol Street SE/SW between Firth Sterling Avenue SE and N Street SE and on Suitland Parkway SE between the Martin Luther King, Jr. Avenue SE overpass and South Capitol Street SE. These single lane closures along these two roadways will typically take place between 9:30 a.m. and 6:00 a.m. the following morning.

Daily and nightly single lane closures will also occur anytime on Firth Sterling Avenue SE, Potomac Avenue SE/SW, Half Street SW, Howard Road SE, Barry Road SE, and St. Elizabeths Avenue SE.

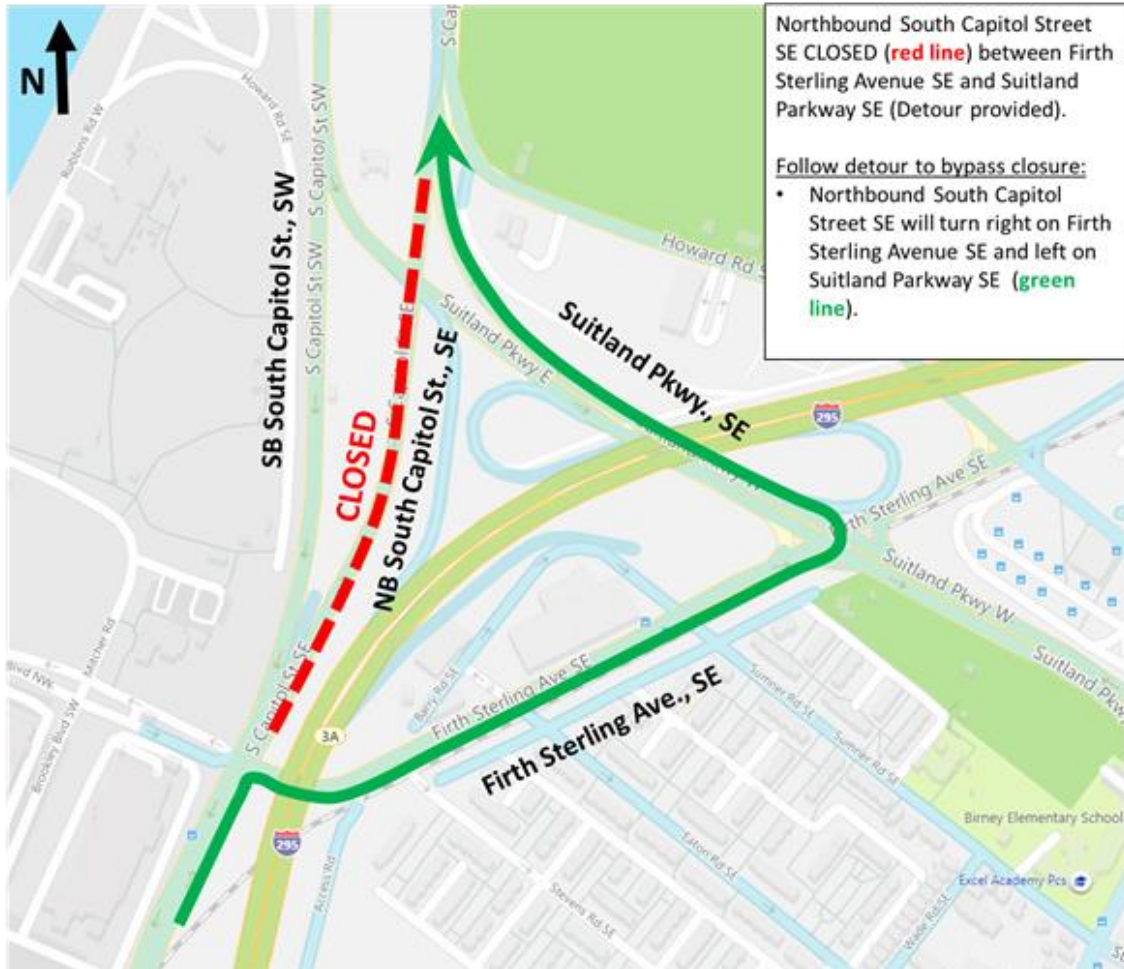
The following full ramp closures will also occur daily and nightly.

- Exit 4 from I-295 Southbound (South Capitol Street / Suitland Parkway)

- I-295 Northbound On-ramp from northbound Firth Sterling Avenue SE

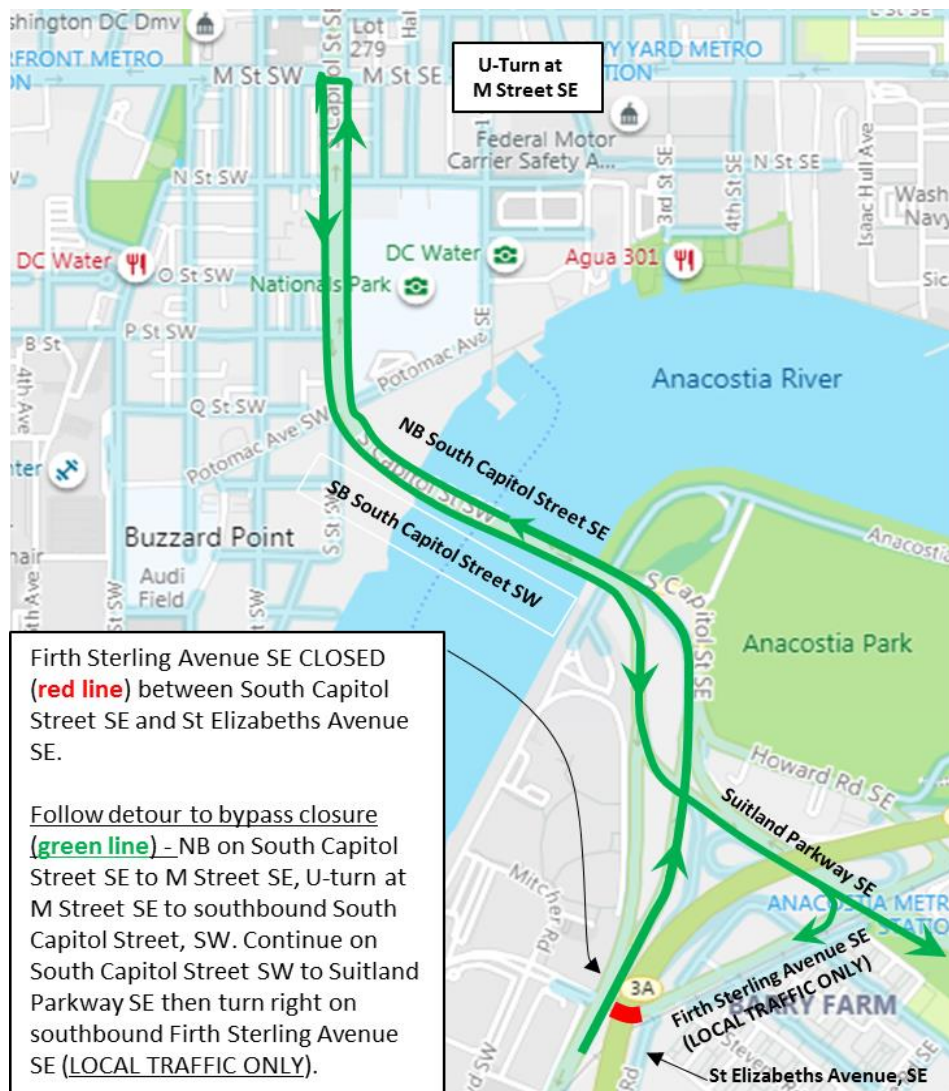
Northbound South Capitol Street SE between Firth Sterling Avenue SE and Suitland Parkway SE will be closed nightly from 8:00 p.m. to 5:00 a.m. the next morning between Monday night, February 8 and Friday morning, February 12, 2021, as shown in the graphic. A marked detour will be in place during these closures.

South Capitol Street SE Closure & Detour



Firth Sterling Avenue SE between South Capitol Street SE and St. Elizabeths Avenue SE will be closed during the weekend on February 13 from 7:00 a.m. to 8:00 p.m. and February 14 from 5:00 a.m. to 8:00 p.m., as shown in the graphic. In the event of weather or other unforeseen delays the closure will be rescheduled to the following weekend. Weekend closures will be followed by nightly closures during the following week. A marked detour will be in place during these closures.

Firth Sterling Avenue SE Closure & Detour

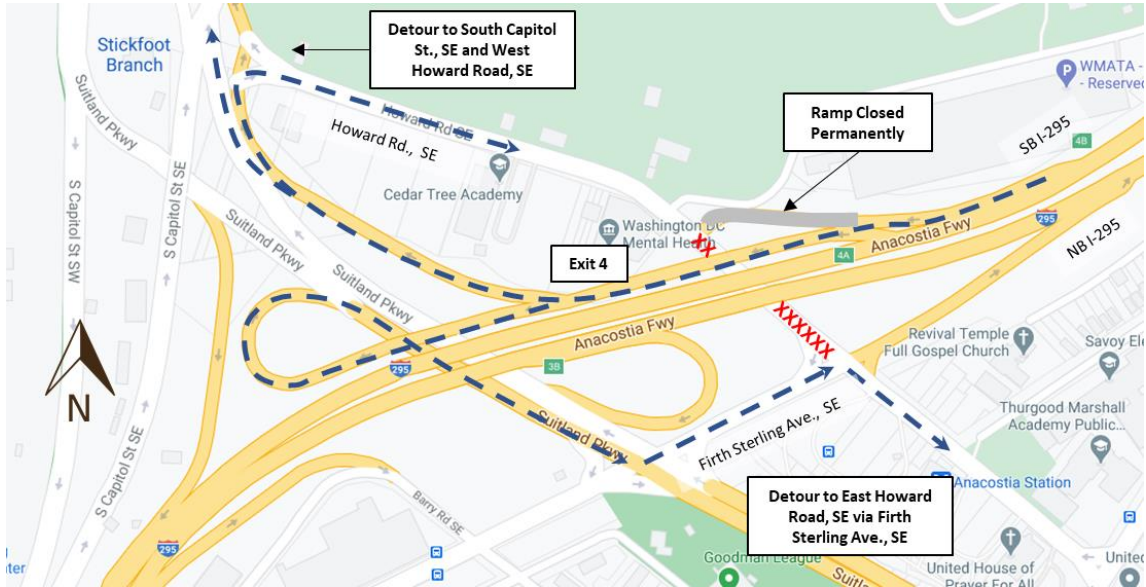


Weeknight full closures will occur on Howard Road SE between the WMATA Parking garage and Firth Sterling Avenue SE. The nightly full closure of Howard Road SE will continue during the weekend starting at 8:00 p.m. Friday night, February 12 and ending by 5:00 a.m. Monday morning, February 15, 2021.

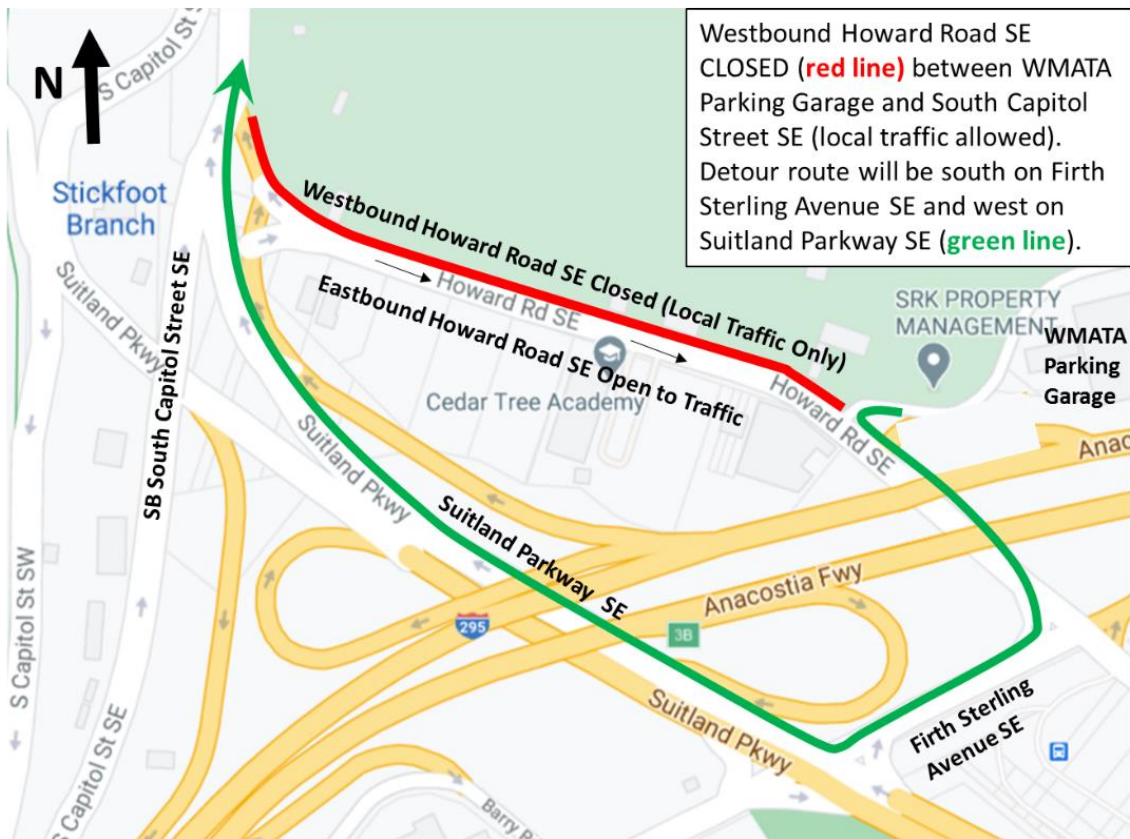
An overnight full closure of westbound Howard Road SE between South Capitol Street SE and the WMATA Metro Parking Garage is planned for Monday, February 08, 2021 from 8:00 p.m. to 5:00 a.m. the following day. If this closure does not occur due to inclement weather or unforeseen circumstances, this closure will occur on Monday, February 15, 2021.

Pedestrian and cyclist access to Anacostia Metrorail Station remains unchanged. However, pedestrians and cyclists are advised to stay alert and follow signage when traveling through this area as well as the surrounding construction areas.

Overnight Howard Road SE Closure & Detour



Overnight Westbound Howard Road SE Closure & Detour



These closures are required for construction activities associated with the following DDOT project:

South Capitol Street Corridor Project - Frederick Douglass Memorial Bridge

The South Capitol Street Corridor Project calls for replacing the Frederick Douglass Memorial Bridge and transforming related sections of the urban freeway into a beautiful scenic boulevard that increases pedestrian and vehicular safety, improves multimodal transportation options, increases community accessibility and supports economic development on both sides of the Anacostia River.

###

For more information about DDOT's ongoing efforts to improve the 295 corridor, visit <http://www.improving295dc.com>.

The mission of the District Department of Transportation (DDOT) is to enhance the quality of life for District residents and visitors by ensuring that people, goods, and information move efficiently and safely with minimal adverse impact on residents and the environment.

Follow us on [Twitter](#) for transportation-related updates and more; like us on [Facebook](#) and visit the website at www.ddot.dc.gov. Visit goDCgo.com for more information on transportation options in the District.