



FOR IMMEDIATE RELEASE

December 17, 2020

Media Contacts:

Lauren Stephens – (202) 465-6112, lauren.stephens@dc.gov

Mariam Nabizad – (202) 359-2678, mariam.nabizad@dc.gov

Temporary Lane Closures on Howard Road SE and Suitland Parkway SE Nightly from December 21, 2020 through January 4, 2021

(Washington, DC) - The District Department of Transportation (DDOT) will temporarily close **Howard Road SE** between the WMATA Parking garage and Firth Sterling Avenue, SE and **Suitland Parkway, SE** between South Capitol Street, SE/SW and Firth Sterling Avenue, SE nightly on the following dates:

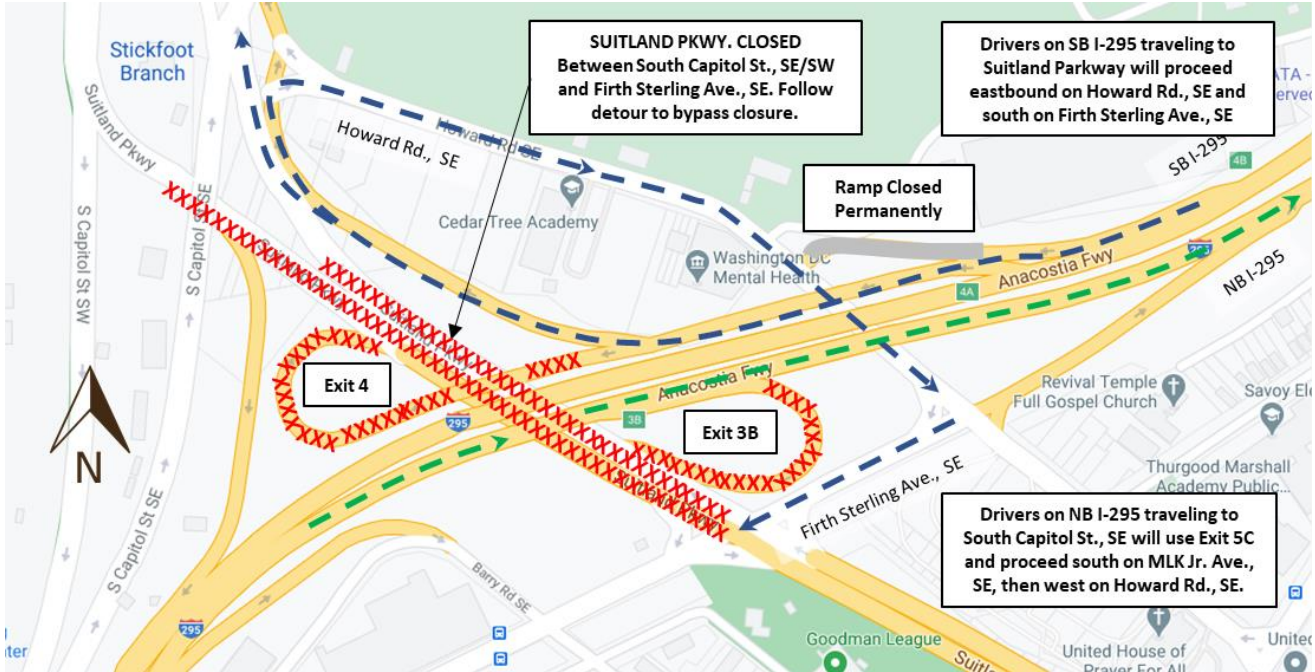
- Between **Monday night, December 21** and **Thursday morning, December 24, 2020**
- Between **Sunday night, December 27** and **Thursday morning, December 31, 2020**; and
- Between **Sunday night, January 3, 2020** and **Monday morning, January 04, 2021**.

All overnight full closures with detours will start at **8:00 pm** and end by **6:00am**. These full closures will not occur on the same nights, only one roadway will be closed at a time; weather permitting.

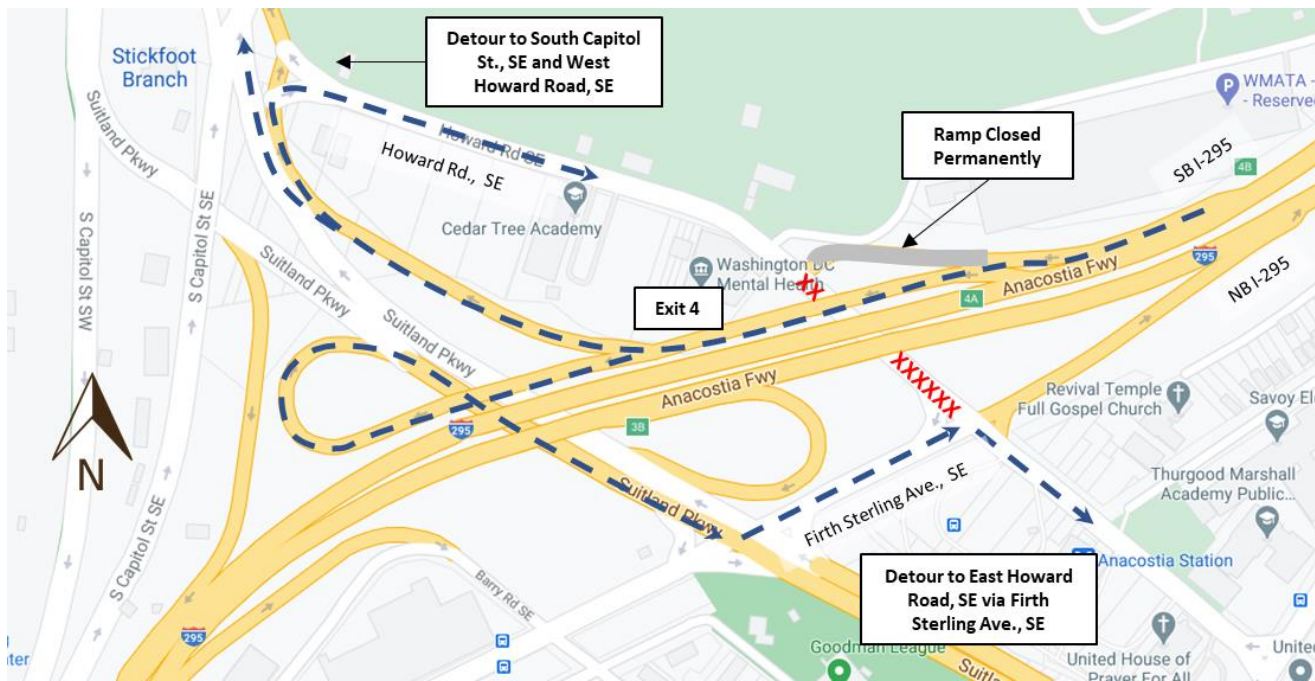
The closure of **Suitland Parkway** will include the closure of access from northbound I-295 (Exit 3B) and southbound I-295 (Exit 4 to Suitland Parkway). Signed detours will be in place during these closures as shown by the detour maps below:

- **When Exit 3B (from I-295 NB) is closed**, traffic on northbound I-295 can access South Capitol Street, SE by continuing north to exit at Exit 5C to Martin Luther King Jr. Avenue, SE and following detour signs to Howard Road, SE and back to Suitland Parkway, SE.
- **When Exit 4 to Suitland Parkway (from I-295 SB) is closed**, traffic on southbound I-295 can access Suitland Parkway by continuing via Exit 4 to Howard Road, SE and follow detour signs to return to Suitland Parkway, SE.

Overnight Suitland Parkway, SE Closure & Detour



Overnight Howard Road, SE Closure & Detour



These closures are necessary for construction activities associated with the South Capitol Street Corridor Project which includes construction of the New Frederick Douglass Memorial Bridge and the reconstruction of the I-295/ Suitland Parkway interchange.

Please observe the posted speed limit and proceed through the construction area with caution. Pedestrians and cyclists are advised to stay alert and follow signage when traveling through this area.

For more information about DDOT's ongoing efforts to improve the 295 corridors, visit www.improving295dc.com.

###

For more information about DDOT's ongoing efforts to improve the 295 corridor, visit www.improving295dc.com.

The mission of the District Department of Transportation (DDOT) is to enhance the quality of life for District residents and visitors by ensuring that people, goods, and information move efficiently and safely with minimal adverse impact on residents and the environment.

Follow us on [Twitter](#) for transportation-related updates and more; like us on [Facebook](#) and visit the website at www.ddot.dc.gov. Visit goDCgo.com for more information on transportation options in the District.