



FOR IMMEDIATE RELEASE

Friday August 7, 2020

Media Contacts:

Lauren Stephens - (202) 465-6112, lauren.stephens@dc.gov

Temporary Road Closure of Howard Road, SE under I-295

August 9 to 17, 2020

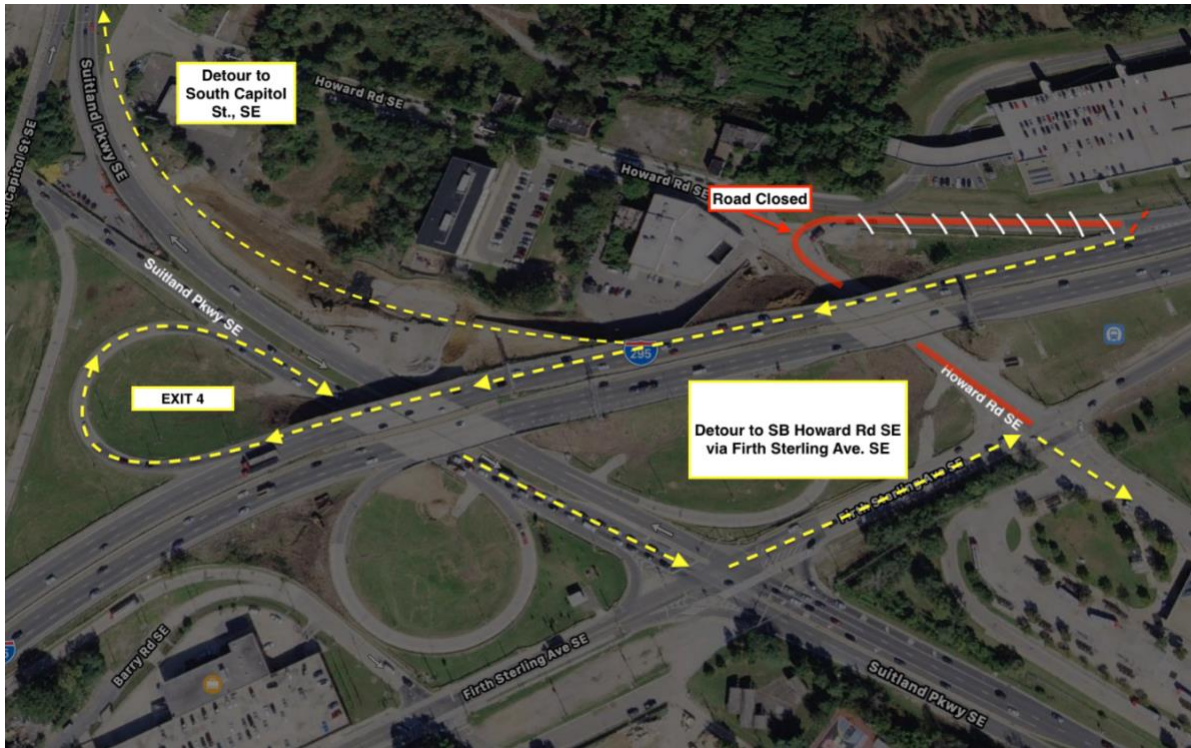
Weeknights 8:00 PM to 6:00 AM

Saturday 5:00 AM to 9:00 PM

(Washington, D.C.) The District Department of Transportation (DDOT) will temporarily close Howard Road SE between the WMATA Parking garage and Firth Sterling Avenue, SE nightly for bridge reconstruction, as shown in the below graphic. The closures will take place from 8:00 pm to 5:00 am the following morning and Saturday from 5:00 am to 9:00 pm, from Sunday, August 9, 2020 to Monday, August 17, 2020. A marked detour will be in place during the closure.

This closure is a result of the reconstruction of the I-295/ Suitland Parkway interchange, and necessary for construction activities associated with the South Capitol Street Corridor Project, which includes construction of the New Frederick Douglass Memorial Bridge.

Pedestrians and cyclists are advised to stay alert and follow signage when traveling through this area.



For more information about DDOT's ongoing efforts to improve the 295 corridor, visit www.improving295dc.com.

The mission of the District Department of Transportation (DDOT) is to enhance the quality of life for District residents and visitors by ensuring that people, goods, and information move efficiently and safely with minimal adverse impact on residents and the environment.

Follow us on [Twitter](#) for transportation-related updates and more; like us on [Facebook](#) and visit the website at www.ddot.dc.gov. Visit goDCgo.com for more information on transportation options in the District.