



FOR IMMEDIATE RELEASE

Monday, June 8, 2020

Media Contacts:

Lauren Stephens - (202) 465-6112, lauren.stephens@dc.gov

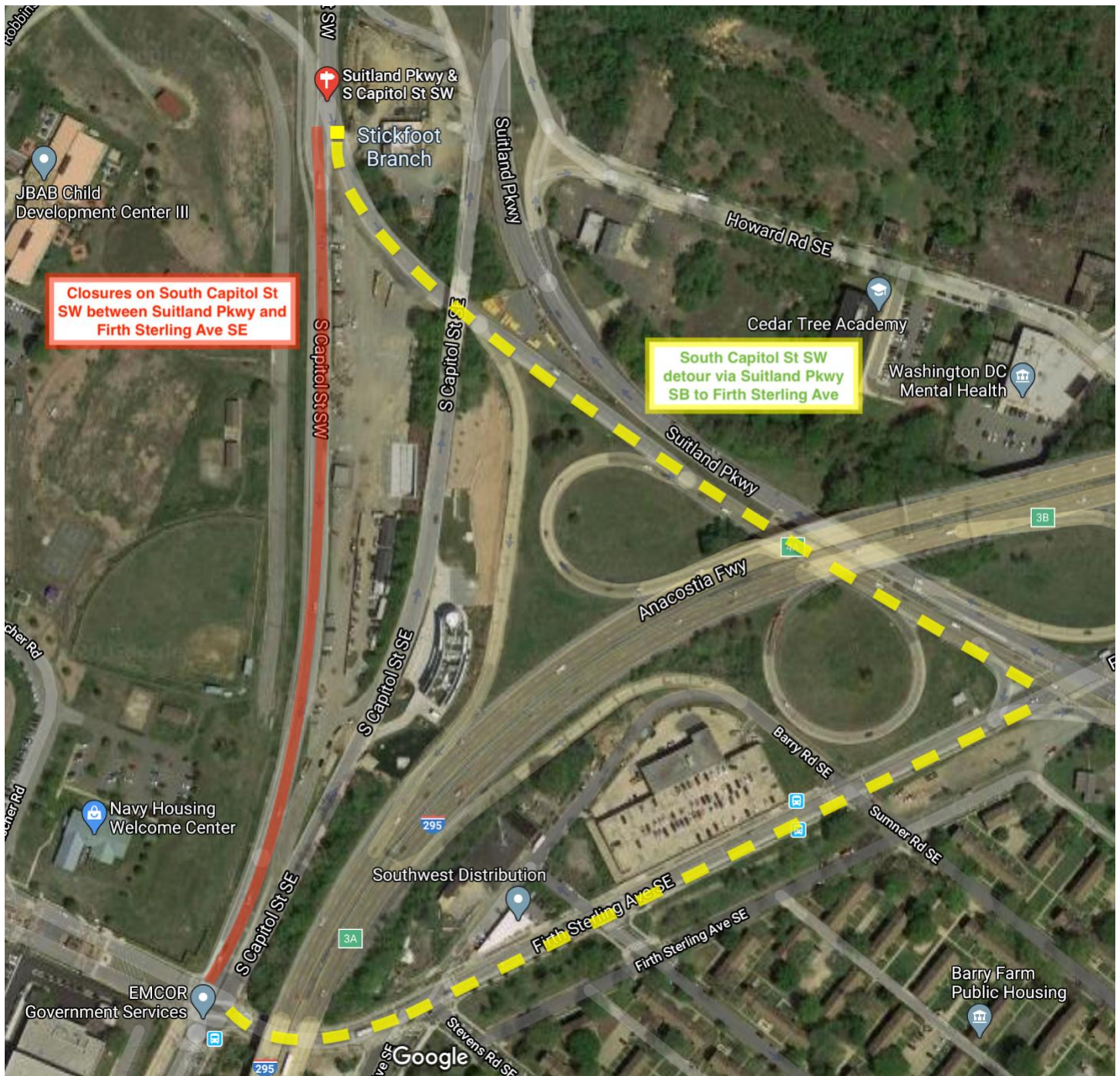
Temporary Closure of South Capitol Street, SW

Revised Dates: June 10, 2020 – July 1, 2020

(Washington, D.C.) The District Department of Transportation (DDOT) will temporarily close all southbound lanes on South Capitol Street, SW, between Suitland Parkway and Firth Sterling Avenue, SE on or about Wednesday, June 10, 2020 until Wednesday, July 1, 2020, as shown in the below graphic. Detour signs will also be prevalent along the closure route to guide motorists safely around the closure.

This closure is necessary for construction activities associated with the South Capitol Street Corridor Project, which includes construction of the New Frederick Douglass Memorial Bridge and the reconstruction of the I-295/ Suitland Parkway interchange.

Pedestrians and cyclists are advised to stay alert and follow signage when traveling through this area.



For more information about DDOT's ongoing efforts to improve the 295 corridor, visit www.improving295dc.com.

The mission of the District Department of Transportation (DDOT) is to enhance the quality of life for District residents and visitors by ensuring that people, goods, and information move efficiently and safely with minimal adverse impact on residents and the environment.

Follow us on [Twitter](#) for transportation-related updates and more; like us on [Facebook](#) and visit the website at www.ddot.dc.gov. Visit goDCgo.com for more information on transportation options in the District.