



**FOR IMMEDIATE RELEASE**

January 22, 2021

**Media Contacts:**

**Lauren Stephens** – (202) 465-6112, [lauren.stephens@dc.gov](mailto:lauren.stephens@dc.gov)

**Mariam Nabizad** – (202) 359-2678, [mariam.nabizad@dc.gov](mailto:mariam.nabizad@dc.gov)

## **I-295 Corridor Projects Weekly Temporary Closures January 25 through February 1, 2021**

(Washington, D.C.) – The District Department of Transportation (DDOT) will temporarily close roadways, lanes, ramps and shoulders on the following corridors to perform construction activities along I-295 / DC 295 and nearby local roads. These closures are contingent on suitable weather, field conditions, and/or adjacent construction activities. Daily closures will typically take place between 9:30 a.m. and 4:00 p.m. Nightly closures will typically take place between 8:00 p.m. and 6:00 a.m. the following day (unless otherwise stated below).

Single left or right lane closures will occur anytime daily and nightly on northbound and southbound I-295 between Exit 1 (Laboratory Road / US Naval Research Lab) and I-695. Double left or right lane closures will only occur nightly until the following morning.

Single left or right lane closures will occur daily and nightly on South Capitol Street SE/SW between Firth Sterling Avenue SE and N Street SE and on Suitland Parkway SE between the Martin Luther King, Jr. Avenue SE overpass and South Capitol Street SE. These single lane closures along these two roadways will typically take place between 9:30 a.m. and 6:00 a.m. the following morning. Double left or right lane closures will only occur nightly until the following morning.

Daily and nightly single lane closures will also occur anytime on Firth Sterling Avenue SE, Potomac Avenue SE/SW, Half Street SW, Howard Road SE, Barry Road SE, St. Elizabeths Avenue SE, Malcolm X Avenue SE, and South Capitol Street SE/SW.

The following full ramp closures will also occur daily and nightly.

- Exit 3B from I-295 Northbound (South Capitol Street / Nationals Park / Downtown)
- Exit 4 from I-295 Southbound (South Capitol Street / Suitland Parkway)
- I-295 Northbound On-ramp from northbound Firth Sterling Avenue SE

- Ramp from MLK Jr. Avenue to I-295 Northbound (continuously)

Northbound South Capitol Street SE will be fully closed at Potomac Avenue SE during the weekend from 5:00 a.m. on Saturday, January 30 to 9:00 p.m. on Sunday, January 31, as shown in the graphic. Northbound traffic crossing the Frederick Douglass Memorial Bridge (FDMB) will be detoured to turn right onto Potomac Avenue SE, then follow First Street SE and M Street SE back to northbound South Capitol Street SE.



Weeknight full closures will occur on Howard Road SE between the WMATA Parking garage and Firth Sterling Avenue SE and Suitland Parkway SE between South Capitol Street SE/SW and Firth Sterling Avenue SE. These full closures will not occur on the same nights. These alternating full closures of Suitland Parkway SE and Howard Road SE will continue during the weekend starting at 8:00 p.m. Friday night, January 29 and ending by 5:00 a.m. Monday morning, February 1, 2021.

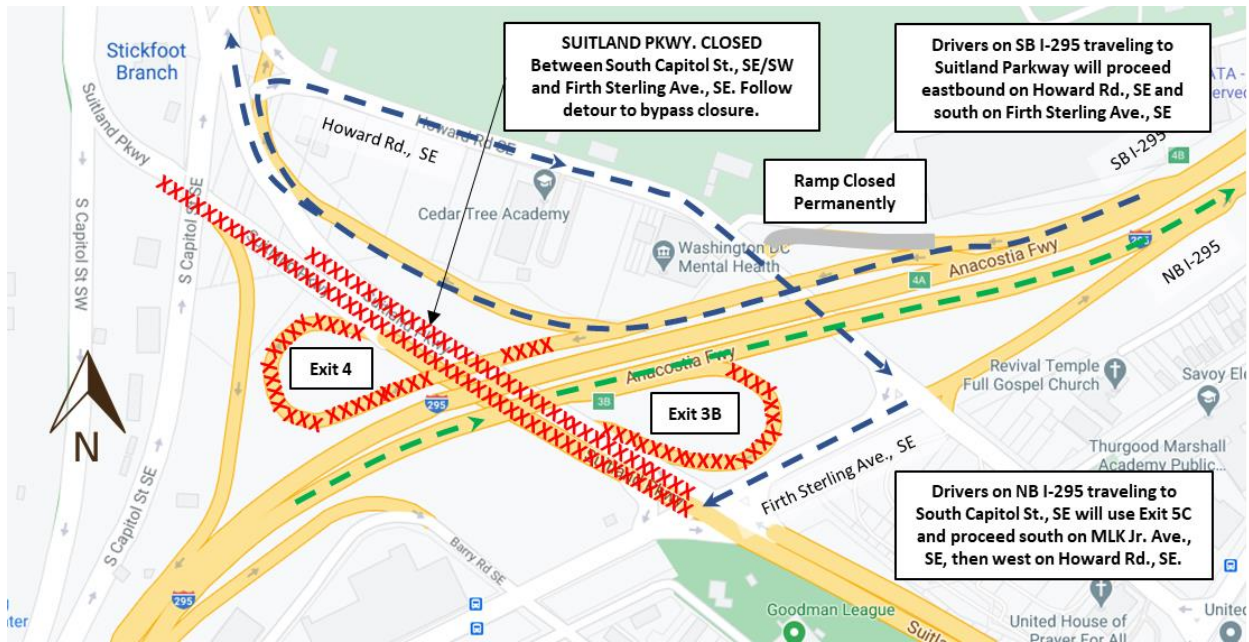
For the closure of Suitland Parkway, the ramps from northbound I-295 (Exit 3B) and southbound I-295 (Exit 4 to Suitland Parkway) will also be closed. The following signed detours will be in place:

- Exit 3B (from I-295 NB) Closure: Take Exit 5C to Martin Luther King Jr. Avenue SE and follow detour signs to Howard Road SE and back to Suitland Parkway SE.
- Exit 4 to Suitland Parkway (from I-295 SB) Closure: Take Exit 4 to Howard Road SE and follow detour signs to

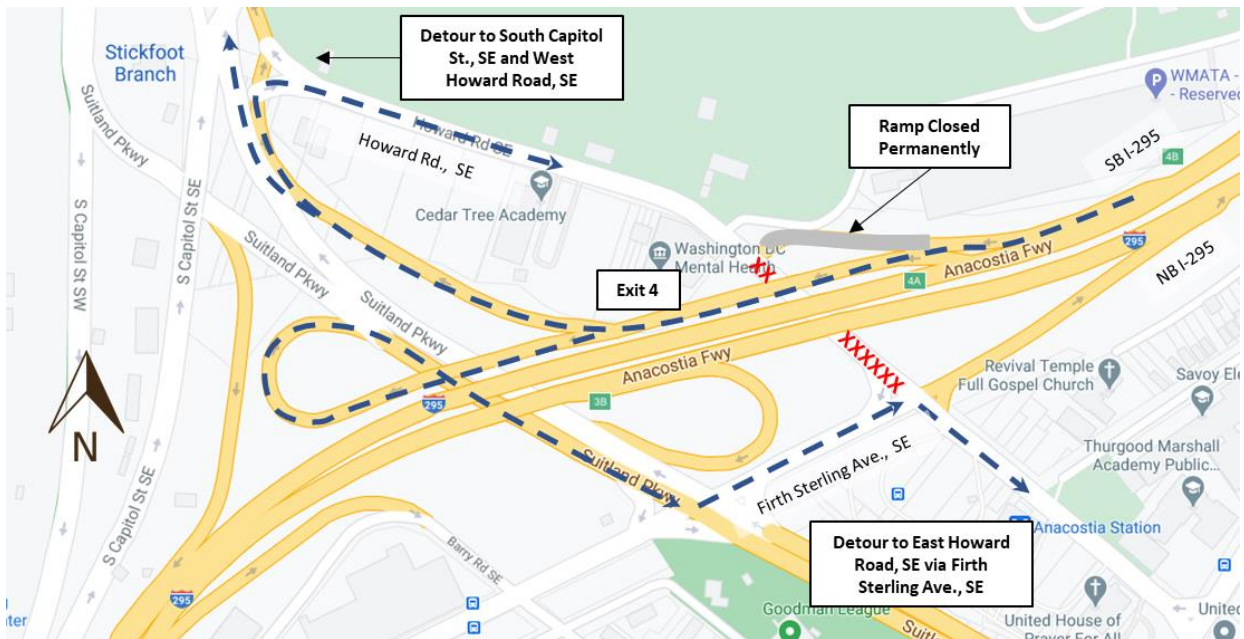


return to Suitland Parkway SE.

### Overnight Suitland Parkway SE Closure & Detour



### Overnight Howard Road SE Closure & Detour



These closures are required for construction activities associated with the following DDOT projects:

**South Capitol Street Corridor Project - Frederick Douglass Memorial Bridge**

The South Capitol Street Corridor Project calls for replacing the Frederick Douglass Memorial Bridge and transforming related sections of the urban freeway into a beautiful scenic boulevard that increases pedestrian and vehicular safety, improves multimodal transportation options, increases community accessibility and supports economic development on both sides of the Anacostia River.

**I-295 / Malcolm X Avenue SE Interchange Improvement Project**

The multiple phases of this project include the reconstruction of the I-295 interchange with Malcolm X Avenue SE, including modified ramps and a new access roadway to the St. Elizabeth's West Campus. The planned improvements will be made between Firth Sterling Avenue SE, on the north, and the South Capitol Street/Martin Luther King, Jr. Avenue SE intersection to the south. The project will provide transportation improvements to serve the proposed Department of Homeland Security headquarters consolidation on the St. Elizabeth's West Campus.

###

For more information about DDOT's ongoing efforts to improve the 295 corridor,  
visit <http://www.improving295dc.com>.

*The mission of the District Department of Transportation (DDOT) is to enhance the quality of life for District residents and visitors by ensuring that people, goods, and information move efficiently and safely with minimal adverse impact on residents and the environment.*

*Follow us on [Twitter](#) for transportation-related updates and more; like us on [Facebook](#) and visit the website at [www.ddot.dc.gov](http://www.ddot.dc.gov). Visit [goDCgo.com](http://goDCgo.com) for more information on transportation options in the District.*