



**FOR IMMEDIATE RELEASE**

Wednesday, July 01, 2020

**Media Contacts:**

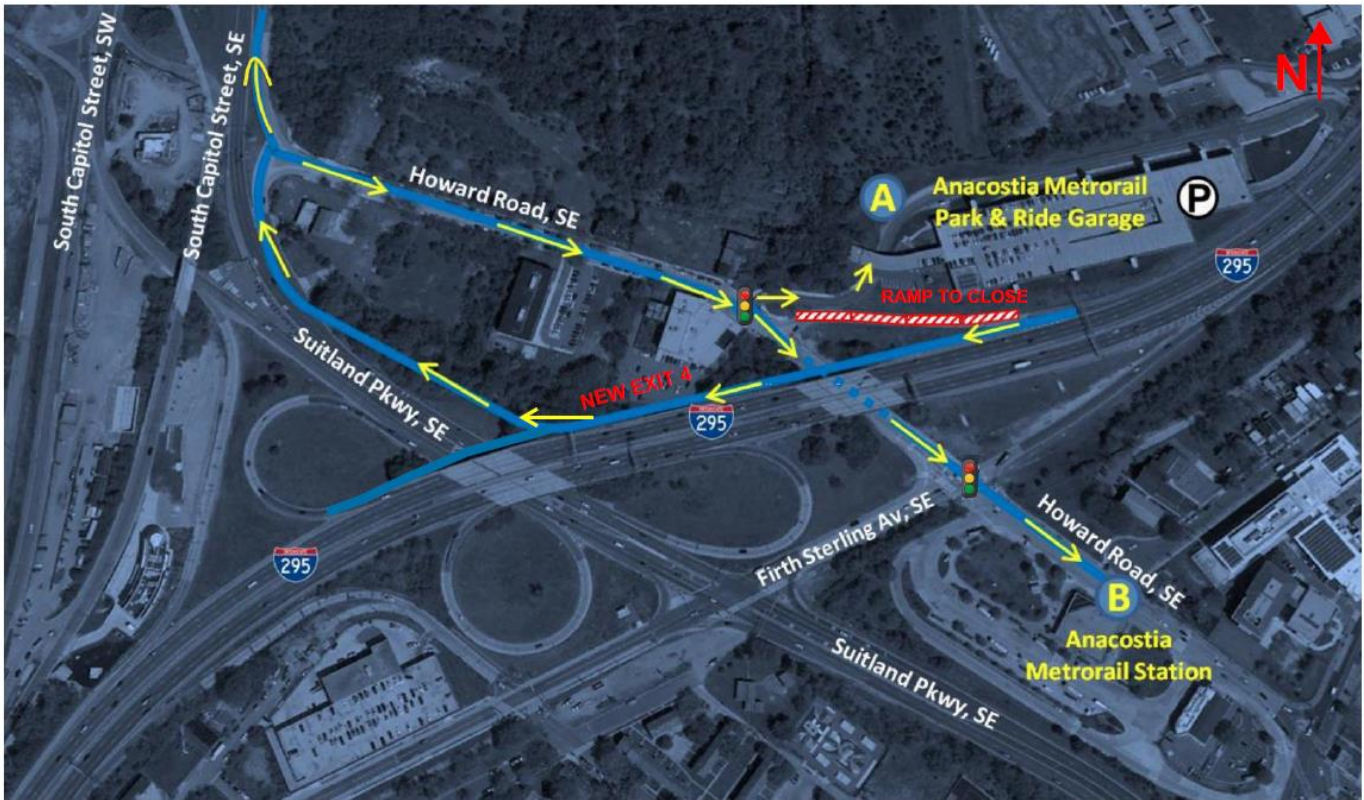
**Lauren Stephens** - (202) 465-6112, [lauren.stephens@dc.gov](mailto:lauren.stephens@dc.gov)

**Permanent Closure of I-295 Southbound Exit 4B to Howard Road SE  
July 10, 2020**

(Washington, D.C.) The District Department of Transportation (DDOT) will permanently close I-295 southbound Exit 4B to Howard Road SE as shown in the below graphic. The removal of the existing Howard Road, SE exit and the creation of a new access point (Exit 4) will provide access to northbound/inbound South Capitol Street, SE, Howard Road, SE, Anacostia Metrorail Park and Ride Garage, Anacostia Metrorail Station, and Firth Sterling Avenue, SE. The new exit ramp route will open on or about July 10, 2020.

This closure is a result of the reconstruction of the I-295/ Suitland Parkway interchange, and necessary for construction activities associated with the South Capitol Street Corridor Project which includes construction of the New Frederick Douglass Memorial Bridge.

Pedestrian and cyclist access to Anacostia Metrorail Station remains unchanged. However, pedestrians and cyclists are advised to stay alert and follow signage when traveling through this area as well as the surrounding construction areas.



For more information about DDOT's ongoing efforts to improve the 295 corridor, visit [www.improving295dc.com](http://www.improving295dc.com).

*The mission of the District Department of Transportation (DDOT) is to enhance the quality of life for District residents and visitors by ensuring that people, goods, and information move efficiently and safely with minimal adverse impact on residents and the environment.*

*Follow us on [Twitter](#) for transportation-related updates and more; like us on [Facebook](#) and visit the website at [www.ddot.dc.gov](http://www.ddot.dc.gov). Visit [goDCgo.com](http://goDCgo.com) for more information on transportation options in the District.*