



For Immediate Release

November 5, 2021

Media Contact

German Vigil (DDOT) – (202) 306-1668, german.vigil@dc.gov

I-295 Corridor Projects - Weekly Closures November 8 through November 15, 2021

(Washington, D.C.) – The District Department of Transportation (DDOT) will temporarily close roadways, lanes, ramps, and shoulders on the following corridors to perform construction activities along I-295 / DC 295 and nearby local roads. These closures are contingent on suitable weather, field conditions, and/or adjacent construction activities. Daily closures will take place between 9:30 a.m. and 3:30 p.m. Nightly closures will take place between 9:00 p.m. and 5:00 a.m. the following day (unless otherwise stated below).

Single left or right lane closures will occur anytime daily and nightly on northbound and southbound I-295 between Exit 1 (Laboratory Road / US Naval Research Lab) and I-695. On northbound I-295 there will be no closures during the weekday AM peak period, and on southbound I-295 there will be no closures during the PM weekday peak period. Double left or right lane closures will occur nightly, starting at 9:00 p.m., until the following morning.

Single left or right lane closures will occur daily and nightly in both directions on South Capitol Street SE/SW between Firth Sterling Avenue SE and N Street SE. Northbound single lane closures will begin at 9:30 a.m. weekdays, extending to 5:00 a.m. the following morning, and during the weekend from 7:00 a.m. to 3:30 p.m. Southbound single lane closures will take place during off-peak hours.

Single left or right lane closures will occur daily and nightly in both directions Suitland Parkway SE between the Martin Luther King, Jr. Avenue SE overpass and South Capitol Street SE. These single lane closures along these roadways will take place during off-peak hours. Double left or right lane closures will only

occur nightly, starting at 9:00 p.m., until the following morning.

No other closures on South Capitol Street SE/SW or Suitland Parkway SE will take place on weekdays between 5:30 a.m. and 9:30 a.m. and between 3:30 p.m. and 9:00 p.m.

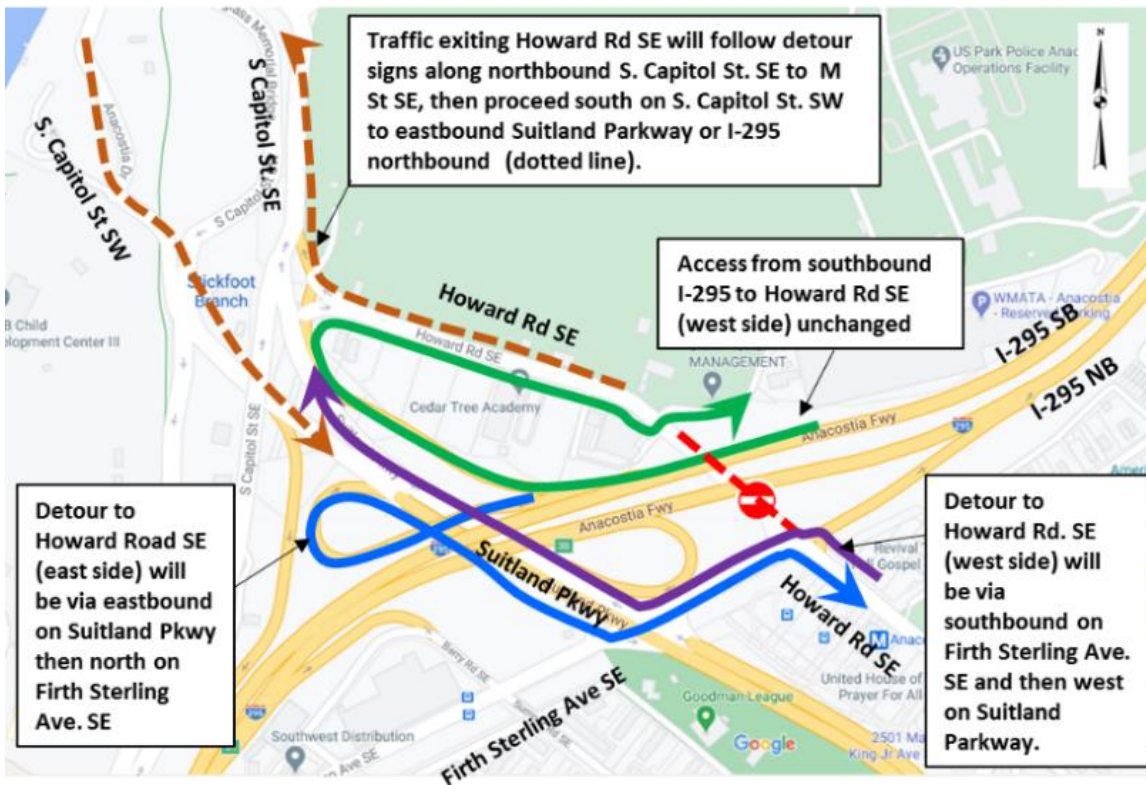
Daily and nightly single lane closures will also occur anytime during off-peak hours on Firth Sterling Avenue SE, and Howard Road SE. Daily and nightly single lane closures will also occur anytime on Potomac Avenue SE/SW, Half Street SW, Barry Road SE, St. Elizabeths Avenue SE, R St. SW and Malcolm X Avenue SE.

The following full ramp closures will also occur during off-peak hours:

- Exit 4 from I-295 Northbound (South Capitol Street / Suitland Parkway)
- Exit 4 from I-295 Southbound (South Capitol Street / Suitland Parkway)
- I-295 Northbound On-ramp from northbound Firth Sterling Avenue SE
- Ramp from South Capitol Street / MLK Jr. Avenue to I-295 Northbound (continuously)

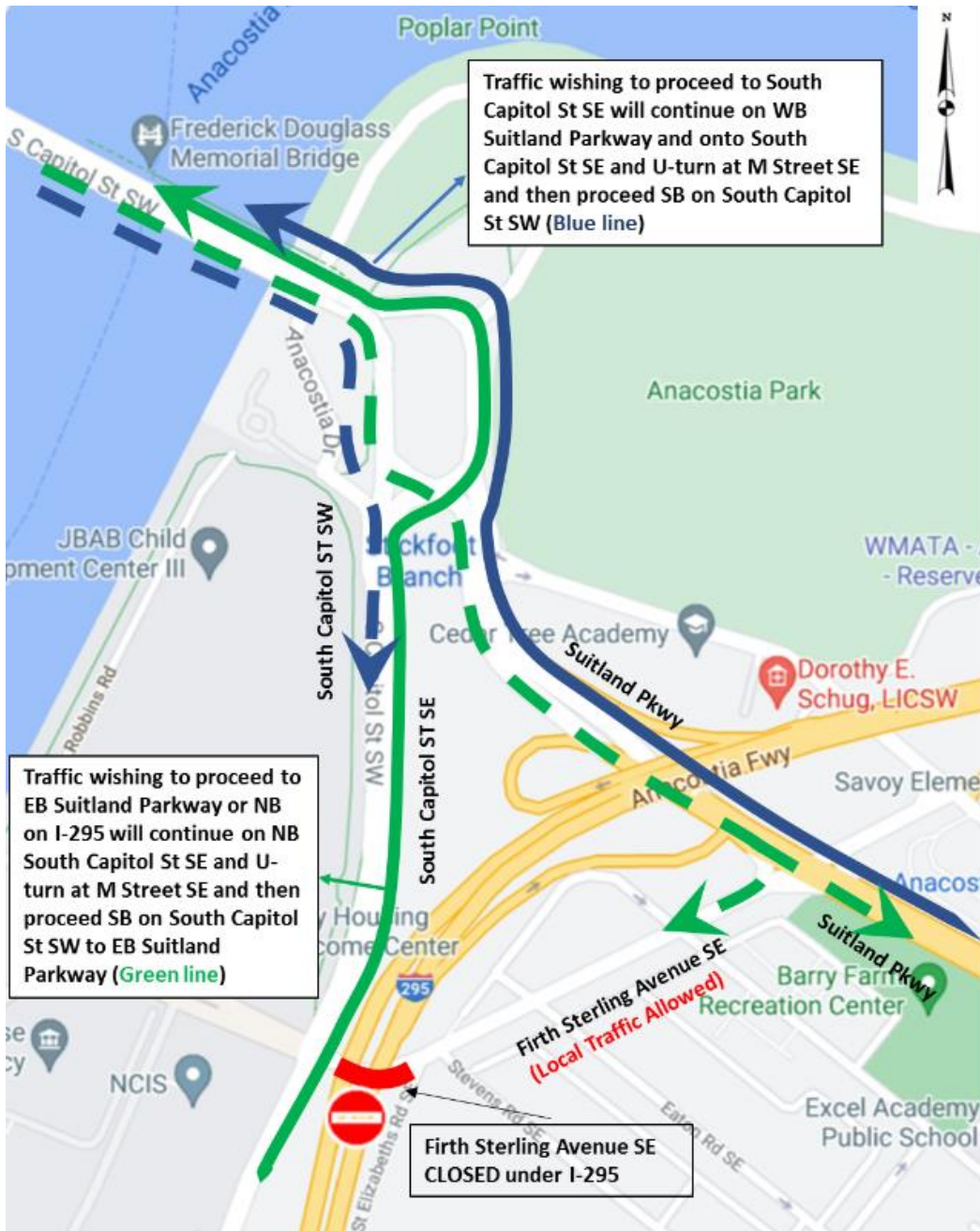
Howard Road SE between the WMATA parking garage and Firth Sterling Avenue SE will be closed between 5:00 a.m. and 9:00 p.m. on Saturday, November 6 and Sunday, November 7, 2021 for bridge construction. Pedestrian access will be continuously maintained throughout the area. Access to and from the WMATA parking garage will be continuously maintained. When Howard Road SE is fully closed, Suitland Parkway SE will remain open to traffic. A marked detour will be in place during these closures.

Howard Road SE Closure & Detour



Firth Sterling Avenue SE between South Capitol Street SE and St Elizabeths Street SE will be closed weeknights between 9:00 p.m. and 5:00 a.m. the following morning from Monday, November 8 through Friday, November 12 for bridge construction. When Firth Sterling Avenue SE is fully closed, Suitland Parkway SE and South Capitol Street SE will remain open to all traffic. A marked detour will be in place during these closures.

Firth Sterling Avenue SE Closure & Detour



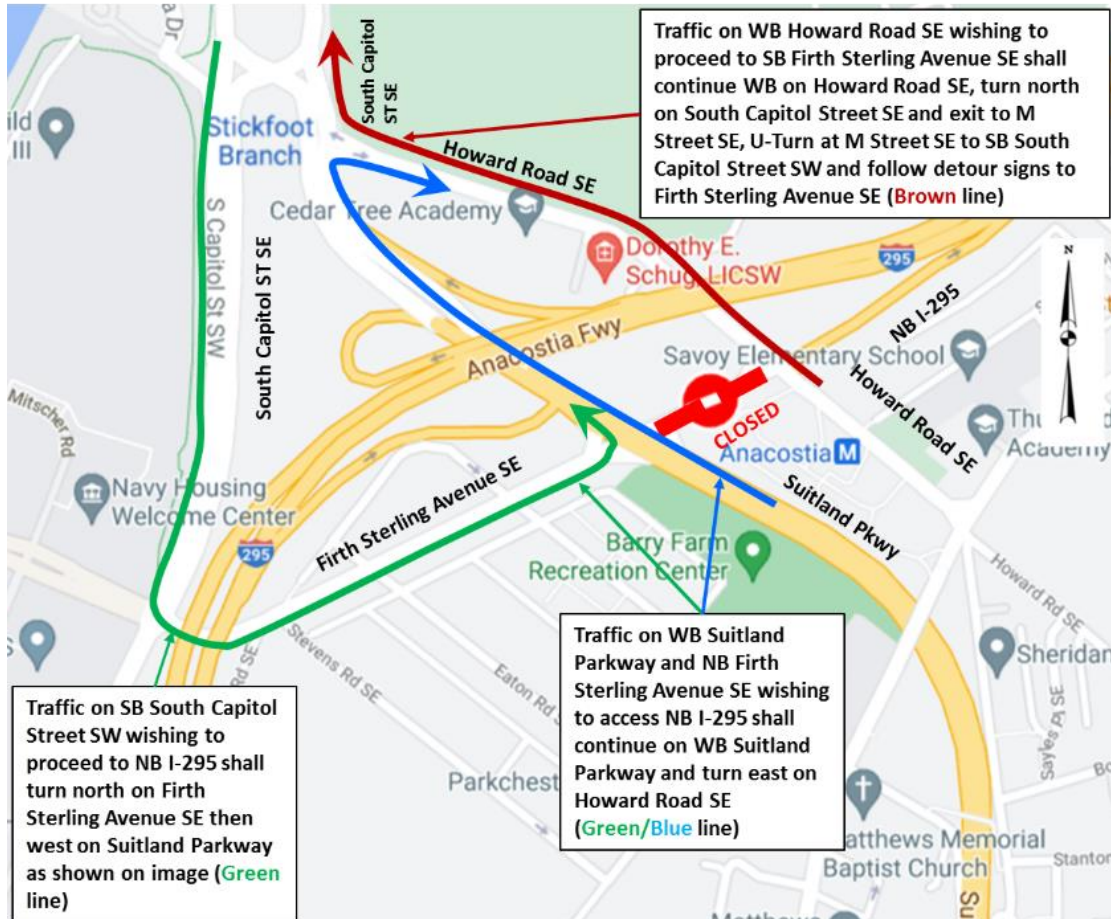
Suitland Parkway between South Capitol Street SE and Firth Sterling Avenue SE will be closed from 9.00 p.m. to 5.00 a.m. next morning from November 11 to November 13, 2021 for re-construction. This will include the closure of Exit 4A from I-295 Southbound to outbound Suitland Parkway SE and the restriction of left turns from Exit 4 from I-295 Northbound to Suitland Parkway SE and South Capitol Street SE. When Suitland Parkway SE is fully closed, Firth Sterling Avenue SE, South Capitol Street SE, and Howard Road SE will remain open to all traffic. A marked detour will be in place during these closures.

Suitland Parkway Closure & Detour



Firth Sterling Avenue SE between Suitland Parkway and Howard Road SE will be closed from 5:00 a.m. to 9:00 p.m. on November 13 and November 14, 2021 for re-construction. When Firth Sterling Avenue SE is fully closed, South Capitol Street SW, Suitland Parkway SE and Howard Road SE will remain open to all traffic. A marked detour will be in place during these closures.

Firth Sterling Avenue SE Closure & Detour at Suitland Parkway



These closures are required for construction activities associated with the following DDOT projects:

South Capitol Street Corridor Project - Frederick Douglass Memorial Bridge

The South Capitol Street Corridor Project calls for replacing the Frederick Douglass Memorial Bridge and transforming related sections of the urban freeway into a beautiful scenic boulevard that increases pedestrian and vehicular safety, improves multimodal transportation options, increases community accessibility, and supports economic development on both sides of the Anacostia River.

I-295 / Malcolm X Avenue SE Interchange Improvement Project

The multiple phases of this project include the reconstruction of the I-295 interchange with Malcolm X Avenue SE, including modified ramps and a new access roadway to the St. Elizabeths West Campus. The planned improvements will be made between Firth Sterling Avenue SE, on the north, and the South

Capitol Street/Martin Luther King, Jr. Avenue SE intersection to the south. The project will provide transportation improvements to serve the proposed Department of Homeland Security headquarters consolidation on the St. Elizabeths West Campus.

Traffic controls will be in place to guide all users of the roadway through the work zones safely. Motorists should expect delays due to the lane closures and are advised to stay alert and be observant of signage and road work crews while traveling in this area.

For more information about efforts to improve the 295 corridors and to stay up to date on traffic related impacts and construction progress, please visit www.improving295dc.com.

###

For more information about DDOT's ongoing efforts to improve the 295 corridor, visit <http://www.improving295dc.com>.

The mission of the District Department of Transportation (DDOT) is to enhance the quality of life for District residents and visitors by ensuring that people, goods, and information move efficiently and safely with minimal adverse impact on residents and the environment.

Follow us on [Twitter](#) for transportation-related updates and more; like us on [Facebook](#) and visit the website at www.ddot.dc.gov. Visit goDCgo.com for more information on transportation options in the District.